

Access panel Alu fully detachable

Aluminium frame, with or without plasterboard inlay, for ceilings and drywall partitions - System F2 AK

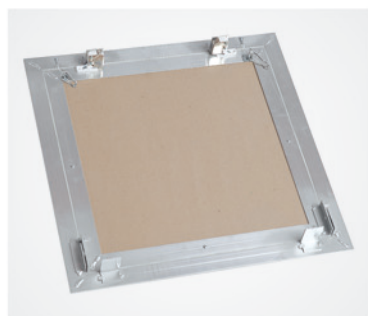
Description

The access panel consists of aluminium profiles, with or without plasterboard inlay GKBI 12.5 mm, 15 mm or 25 mm and two latches.

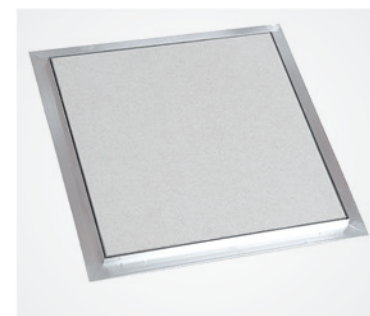
Both, an outer and an inner frame of the access panel consist of four single frames, which are firmly connected due to a special welding process. For sizes from 300 x 300 mm, the access panel is equipped with a safety-system against accidental opening. In order to avoid accidents, this safety-system has to be secured after each opening. The access panel is easily installed in walls and inaccessible floor zones. A joint gap of 1.5 mm is visible between outer frame and door leaf, which is equipped with a circumferential joint. The concealed snap locks open the access panel when pressure is applied to the flap on the spring loaded latch side.



Ready-to-paint door leaf



Fully detachable hatch



Standard sizes for cladding of 12.5 mm

System F2	Dimensions in mm				
	A	B	C	D	E
AK200200G125	200	200	13	28	40
AK300300G125	300	300	13	28	40
AK400400G125	400	400	13	28	40
AK500500G125	500	500	13	28	40
AK600600G125	600	600	13	28	40

All standard sizes are available for cladding thicknesses of 12.5 mm, 15 mm or 25 mm.

For other cladding thicknesses, please do not hesitate to contact us.

Customized solutions

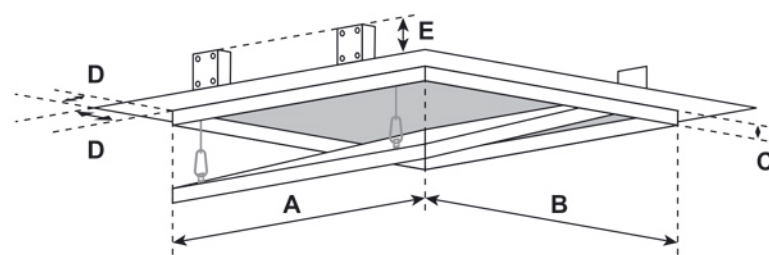
Customized sizes can be produced in every dimension upon enquiry.

Locks

The access panel can be equipped with the following types of bolts:

- Four-square bolt
- Round-cylinder lock
- Profile cylinder

Additionally, the screwed models as well as the aluminium frame models are available.



Particular advantages of our system

- Economical solution
- Delivery at short notice on request
- Easy and quick assembly
- Solid aluminium frame
- Sophisticated solution
- Flush installation in ceilings and drywall partitions
- Ready-to-paint door leaf
- Also applicable to perforated gypsum board

FF Systembau
Access panels