

Access panel Alu 'airtight and dust-proof'

Aluminium frame, with plasterboard inlay, for ceilings and drywall partitions - System F2 AKL

Alu-Magic



Ready-to-paint door leaf

Description

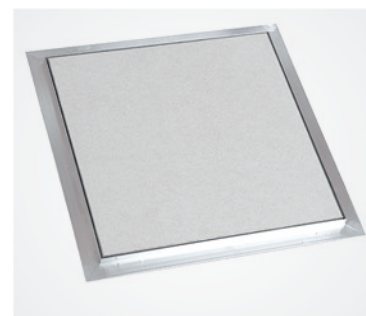
The access panel consists of aluminium profiles, with plasterboard inlay GKBI 12.5 mm, 15 mm or 25 mm and two latches.

Both, an outer and an inner frame of the access panel consist of four single frames, which are firmly connected due to a special welding process. The access panel is equipped with a catchwire. In order to avoid accidents, this safety-system has to be secured after each opening.

The access panel is readily installable in walls and inaccessible floor zones. A joint gap of 2 mm is visible between outer frame and door leaf, which is equipped with an innovative brush joint. The concealed snap locks open the access panel when pressure is applied to the flap on the spring loaded latch side.



Fully detachable hatch



Standard sizes for plasterboard inlay 12.5 mm

System F2	Dimensions in mm				
	A	B	C	D	E
AKL200200G125	200	200	13	28	40
AKL300300G125	300	300	13	28	40
AKL400400G125	400	400	13	28	40
AKL500500G125	500	500	13	28	40
AKL600600G125	600	600	13	28	40

All standard sizes are available for cladding thicknesses of 12.5 mm, 15 mm or 25 mm.

For other cladding thicknesses, please do not hesitate to contact us.

Tested up to 1000 x 1000 mm
(+50% possible in perimeter or surface area).

Customized solutions

Customized sizes can be produced in every dimension upon enquiry.

Locks

The access panel can be equipped with the following types of bolts:

- Four-square bolt
- Round-cylinder lock
- Profile cylinder

Particular advantages of our system

- Economical solution
- Delivery at short notice on request
- Easy and quick assembly
- Also tested with locks
- Sophisticated solution
- Flush installation in ceilings and drywall partitions
- Validated 'airtight and dust-proof':
Test report Nr. 106 34533 (ift Rosenheim)

FF Systembau
Access panels